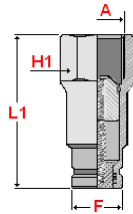


Balflex® Hydraulic Quick Couplings

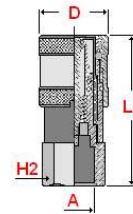


Balflex® Flat Face Quick-Action Couplings ISO 16028

flat face couplings for high pressure hydraulic systems without any fluid leakage



40.F005 / 40.F015 / 40.F025 - Male



40.F006 / 40.F016 / 40.F026 - Female

NON-SPILL COUPLING



According to ISO 16028

Materials: carbon steel body, zinc plated, with synthetic rubber sealing rings and PTFE holding rings

Threads : BSP, NPT, UNF

Valve closure detail : flat face

Maximum operating temperature : + 125°C / + 257°F (other materials for higher temperatures as special features)

Minimum operating temperature : - 25°C / - 13°F (other materials for lower temperatures as special features)

Application : industrial equipment and agricultural equipment

part number male	part number female	thread	working pressure		dimensions (mm)					
			bar	PSI	F	L1	H1	D	L2	H2
40.F005.04	40.F006.04	1/4" BSP	315	4560	16.2	85.5	22	28	85.5	22
40.F005.0406	40.F006.0406	3/8" BSP	315	4560	16.2	85.5	22	28	85.5	22
40.F005.06	40.F006.06	3/8" BSP	300	4350	19.8	116.5	24	32	116.5	27
40.F005.0608	40.F006.0608	1/2" BSP	300	4350	19.8	116.5	24	32	116.5	27
40.F005.08	40.F006.08	1/2" BSP	250	3600	24.5	134.5	27	38	134.5	32
40.F005.0812	40.F006.0812	3/4" BSP	250	3600	24.5	134.5	27	38	134.5	32
40.F005.12	40.F006.12	3/4" BSP	250	3600	27.0	132.0	36	42	132.0	36
40.F005.16	40.F006.16	1" BSP	250	3600	30.0	154.0	45	48	154.0	45
40.F005.20	40.F006.20	1.1/4" BSP	250	3600	36.0	173.0	55	55	173.0	55
40.F005.24	40.F006.24	1.1/2" BSP	200	2900	57.0	215.0	70	80	215.0	65
40.F005.32	40.F006.32	2" BSP	180	2600	73.0	230.0	75	100	230.0	80
40.F015.04	40.F016.04	1/4" NPT	315	4560	16.2	85.5	22	28	85.5	22
40.F015.0406	40.F016.0406	3/8" NPT	315	4560	16.2	85.5	22	28	85.5	22
40.F015.06	40.F016.06	3/8" NPT	300	4350	19.8	116.5	24	32	116.5	27
40.F015.0608	40.F016.0608	1/2" NPT	300	4350	19.8	116.5	24	32	116.5	27
40.F015.08	40.F016.08	1/2" NPT	250	3600	24.5	134.5	27	38	134.5	32
40.F015.0812	40.F016.0812	3/4" NPT	250	3600	24.5	134.5	27	38	134.5	32
40.F015.12	40.F016.12	3/4" NPT	250	3600	27.0	132.0	36	42	132.0	36
40.F015.16	40.F016.16	1" NPT	250	3600	30.0	154.0	45	48	154.0	45
40.F015.20	40.F016.20	1.1/4" NPT	250	3600	36.0	173.0	55	55	173.0	55
40.F015.24	40.F016.24	1.1/2" NPT	200	2900	57.0	215.0	70	80	215.0	65
40.F015.32	40.F016.32	2" NPT	180	2600	73.0	230.0	75	100	230.0	80
40.F025.0608	40.F026.0608	3/4"-16 UNF	300	4350	19.8	116.5	24	32	116.5	27
40.F025.0610	40.F026.0610	7/8"-14 UNF	300	4350	19.8	116.5	24	32	116.5	27
40.F025.08	40.F026.08	3/4"-16 UNF	300	4350	24.5	134.5	27	38	134.5	32
40.F025.0812	40.F026.0812	1.1/16"-12 UNF	250	3600	24.5	134.5	27	38	134.5	32
40.F025.12	40.F026.12	1.1/16"-12 UNF	250	3600	27.0	132.0	36	42	132.0	36
40.F025.16	40.F026.16	1.5/16"-12 UNF	250	3600	30.0	154.0	45	48	154.0	45

Construction characteristics and dimensions may be changed at any time without prior notice.

The data contained herein is information purposes only and does not enlarge, amend or imply any warranty other than provided by the manufacturer with the product. Any use of the product not in conformance with the manufacturer's instructions may be dangerous.

Only items in this catalogue are carried in stock. Some items are subjected to minimum quantities or sold only in multiples of standard quantities. Please refer to the price list or contact our commercial department.

Balflex® – The European Technology