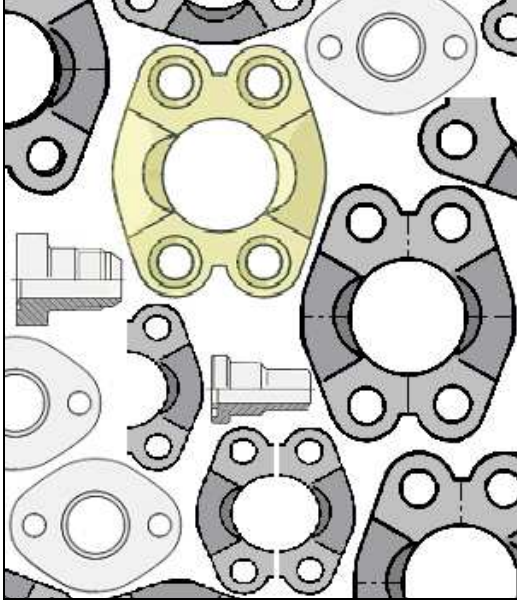




# Balfit<sup>®</sup> SAE Flanged Connections

## Balfit<sup>®</sup> SAE Flanges

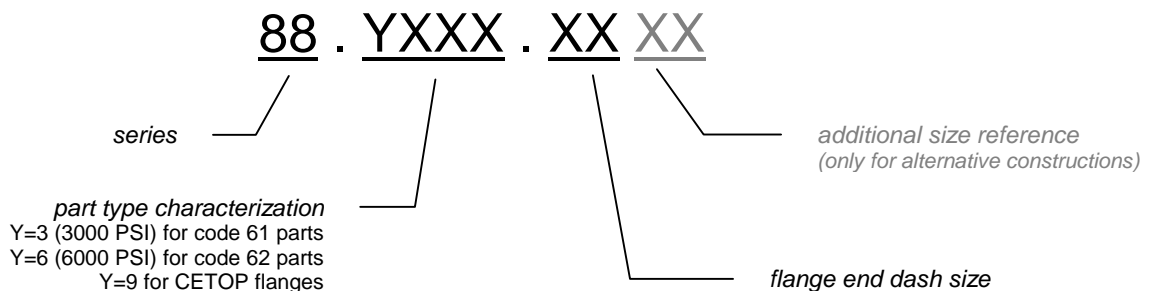


The range of **Balfit<sup>®</sup>** SAE flanges is produced according to **Balflex<sup>®</sup>** specifications and to **ISO 6162, SAE J516 / J518** and other standards. It covers a very wide variety of applications typical of hydraulic pipe pressure lines.

Flanges according to **SAE J516 / J 518** are used on hydraulic systems in many fields (shipbuilding, earth moving machinery, machine tools, etc.). **Balflex<sup>®</sup>** optimized the production of these connectors and their compatibility with a wide range of other types of hydraulic fittings, in order to assure the highest performance and the most extensive range of applications. The **Balfit<sup>®</sup>** flanged connections program in this catalogue includes:

- SAE J518 flange clamps and flanged heads
- SAE J518 flanged adapters (threaded, weld in, weld on)
- CETOP flange clamps and flanged heads

The **Balfit<sup>®</sup>** flanged fittings part code is composed of three groups of digits:



Construction characteristics and dimensions may be changed at any time without prior notice.

The data contained herein is information purposes only and does not enlarge, amend or imply any warranty other than provided by the manufacturer with the product. Any use of the product not in conformance with the manufacturer's instructions may be dangerous.

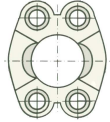
Only items in this catalogue are carried in stock. Some items are subjected to minimum quantities or sold only in multiples of standard quantities. Please refer to the price list or contact our commercial department.

**Balflex<sup>®</sup> – The European Technology**

# Balfit<sup>®</sup> SAE Flanged Connections

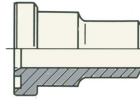


## Balfit<sup>®</sup> SAE Split Flanges



### SAE Split Flange Clamps

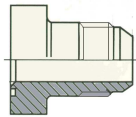
- 88.5300 - Split Flange Clamp Half (Cut)
- 88.5302 - Split Flange Clamp (Uncut)
- 88.3110 - Split Flange Clamp with Threaded Metric Holes
- 88.3120 - Split Flange Clamp with Threaded UNC Holes



### SAE Flanged Heads

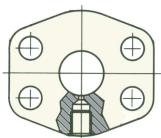
- 88.3200 - Flanged Head for weld-on BSP pipe
- 88.3210 - Flanged Head for weld-on Metric pipe
- 88.3230 - Flanged Head with BSP threaded male connection
- 88.3240 - Flanged Head with Metric threaded male connection

## Balfit<sup>®</sup> SAE Flanges with Threaded Connections



- 88.3300 - BSP female thread (with o-ring groove)
- 88.3301 - BSP female thread counter-flange (without o-ring groove)
- 88.3302 - BSP female thread flat flange
- 88.3303 - BSP female thread 90° elbow flange
- 88.3304 - BSP female thread 90° compact elbow flange
- 88.3310 - NPT female thread (with o-ring groove)
- 88.3311 - NPT female thread counter-flange (without o-ring groove)
- 88.3313 - NPT female thread 90° elbow flange
- 88.3320 - UNF female thread (with o-ring groove)
- 88.3321 - UNF female thread counter-flange (without o-ring groove)
- 88.3323 - UNF female thread 90° elbow flange
- 88.3330 - JIC 37° flared male
- 88.3333 - JIC 37° flared male 90° elbow
- 88.3340 - Metric male thread DIN 3901 24° cone
- 88.3350 - BSP male thread 60° cone
- 88.3360 - UNF o-ring face seal male

## Balfit<sup>®</sup> SAE Flat Flanges



- 88.6600 - Flat Flange with Through Hole
- 88.3610 - Flat Blind Flange
- 88.3601 - SAE Flat Distance Piece with Lateral Hole
- 88.3611 - Flat Blind Counter-Flange

Construction characteristics and dimensions may be changed at any time without prior notice.

The data contained herein is information purposes only and does not enlarge, amend or imply any warranty other than provided by the manufacturer with the product. Any use of the product not in conformance with the manufacturer's instructions may be dangerous.

Only items in this catalogue are carried in stock. Some items are subjected to minimum quantities or sold only in multiples of standard quantities. Please refer to the price list or contact our commercial department.



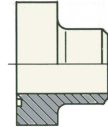
# Balfit<sup>®</sup> SAE Flanged Connections

## Balfit<sup>®</sup> SAE Flanged Welding Connectors



### SAE Flanges with Weld-In Connections

- 88.3400 - BSP tube weld-in flange (with o-ring groove)
- 88.3401 - BSP tube weld-in counter-flange (without o-ring groove)
- 88.3403 - BSP tube weld-in 90° elbow flange
- 88.3404 - BSP tube weld-in 90° compact elbow flange
- 88.3406 - BSP tube weld-in flat flange (with o-ring groove)
- 88.3407 - BSP tube weld-in flat counter-flange (without o-ring groove)
- 88.3410 - Metric tube weld-in flange (with o-ring groove)
- 88.3411 - Metric tube weld-in counter-flange (without o-ring groove)
- 88.3413 - Metric tube weld-in 90° elbow flange



### SAE Flanges with Weld-On Connections (30° flared)

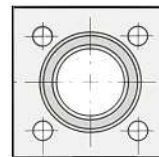
- 88.3500 - BSP tube weld-on flange (with o-ring groove)
- 88.3501 - BSP tube weld-on counter-flange (without o-ring groove)
- 88.3503 - BSP tube weld-on 90° elbow flange (with o-ring groove)
- 88.3510 - Metric tube weld-on flange (with o-ring groove)
- 88.3511 - Metric tube weld-on counter-flange (without o-ring groove)

## Balfit<sup>®</sup> Other Flanges



### Other Flanges

- 88.7710 - Oval Flanges with through hole
- 88.7720 - Round flat flange with BSP threaded hole
- 88.7721 - Round flange with internal BSP thread connection
- 88.7722 - Round flange with external BSP thread connection
- 88.7723 - Round flange with weld on connection
- 88.7740 - Square flange with DIN 24 ° cone male thread
- 88.7743 - Square flange 90° elbow with DIN 24 ° cone male thread



### CETOP Flanges

- 88.9300 - Square CETOP flat flange
- 88.9310 - Weld on CETOP flanged head adapter
- 88.9320 - CETOP blind adapter

### Notes

All SAE flange references repeated for 6000 PSI (code 62) flanges; change the second digit of the part number from 3 to 6

**Balfit<sup>®</sup>** flanges are made from St 52.3 steel forged parts. Upon request the same parts are available in AISI 316L stainless steel (add an "S" at the end of the part number).

O-Rings and screws must be ordered separately. Screws are only available in carbon steel. O-Rings are available in NBR (working temperature up to +98°C) and Vytan (working temperature up to +200°C)

### Important notice

**Selection, assembly and installation of hydraulic lines require specific professional training.** This catalogue only supplies additional information and technical data for selection and use of Balfit flanged connectors.

Construction characteristics and dimensions may be changed at any time without prior notice.

The data contained herein is information purposes only and does not enlarge, amend or imply any warranty other than provided by the manufacturer with the product. Any use of the product not in conformance with the manufacturer's instructions may be dangerous.

Only items in this catalogue are carried in stock. Some items are subjected to minimum quantities or sold only in multiples of standard quantities. Please refer to the price list or contact our commercial department.

**Balflex<sup>®</sup> – The European Technology**